



TCX Turbine-Driven Rotary Vessel Cleaning Device

High-impact, efficient cleaning of pharmaceutical and biopharmaceutical vessels

Benefits

- Compact, lightweight device with polished exterior surfaces uses a flow-through design for lubricant-free cleaning
- Automates cleaning of vessels up to 26' (7.9 m) in diameter – eliminates the need for manual labor; ensures consistent thorough cleaning
- High-impact cleaning at low pressures; solid stream nozzles with specially-designed orifices optimize impact and throw distance
- Choice of three nozzle orifice sizes to match performance to vessel size
- Turbine gear design enables automatic indexed spray pattern for superior cleaning efficiency
- Nozzles rotate 360° around the horizontal axis and the vertical axis to ensure thorough cleaning
- Easy installation and removal from vessel; dual-clutch design allows propeller to move freely
- Optional check valve allows nozzles to be immersed in fluid

Specifications

Pressure range: 44 to 116 psi (3 to 8 bar)
Nozzle orifice size options: 0.250" (7 mm), 0.312" (8 mm) and 0.375" (9 mm)
Throw distance: 8 to 26' (2.5 to 7.9 m)
Spray coverage: 360°
Revolutions: 2 to 3 per minute
Time to complete full pattern: 14 to 35 minutes
Hydraulic turbine style
Self-lubricating with cleaning fluid
Max. tank dia.: 26' (7.9 m)
Min. tank opening size: 5-11/16" (144.5 mm)
Materials: 304SS*, carbon-impregnated PTFE, Polyacetal, 304SS thrust bearings
Pipe connection: 1-1/2" BSPT (F) and 1-1/2" NPT (F)
Weight: 8.8 lbs (4 kg)

*316 stainless steel can be quoted

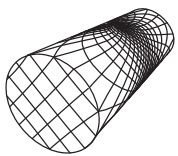
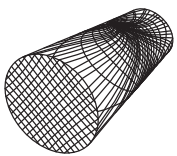
Typical Applications

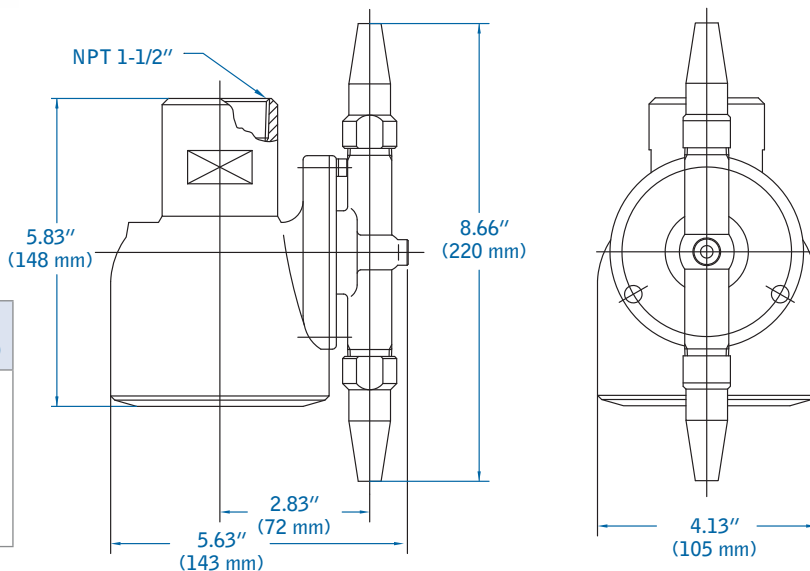


Vessel Cleaning
De-roughing/Passivating Purified Water Tanks
CIP Spray Dry
CIP Fluid Bed
Active Pharmaceutical Ingredients (API) Industry

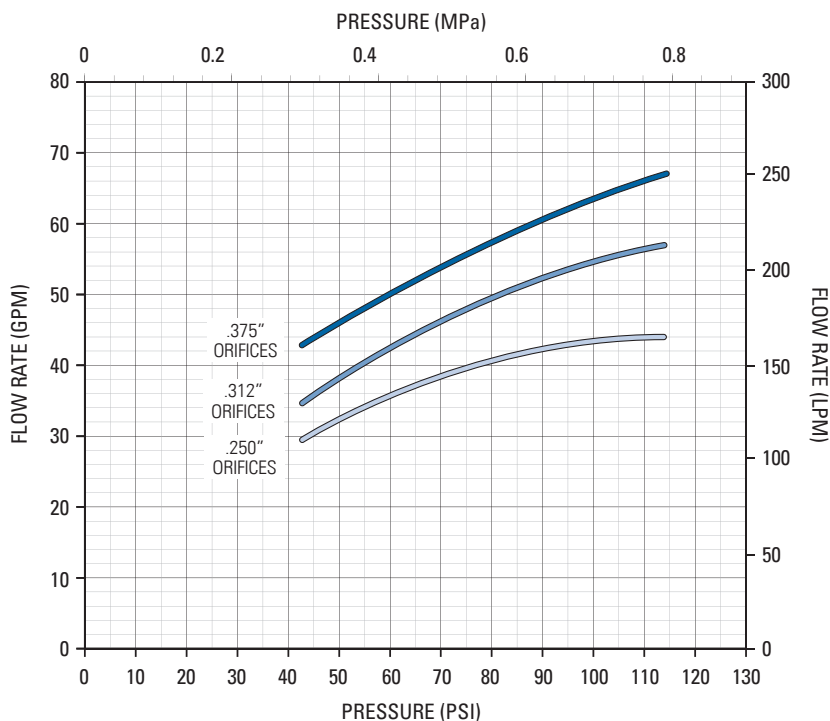
TCX Vessel Cleaning Device

Dimensions and Performance Data

Type of Coverage	Light Rinse Cycle (1/4 Cycle)	Heavy Wash Cycle (Full Cycle)
		



TCX Vessel Cleaning Device Performance Curves



Ordering Information

TCX Vessel Cleaning Device

X1-1/2ECTCX - XXXSS - XXX - C			
Inlet Conn.	Material Code	Orifice Size	Check Valve
B1-1/2 = BSPT	304	.375	C
1-1/2 = NPT		.312	NC
		.250	

CAUTION: Avoid hard and abrasive particles in the cleaning fluid which could lead to premature wear on the internal mechanism. A 50 mesh strainer is suggested in the supply line.



Spraying Systems Co.
Experts in Spray Technology

North Avenue and Schmale Road, P.O. Box 7900, Wheaton, IL 60187-7901 USA

Tel: 1.800.95.SPRAY Intl. Tel: 1.630.665.5000

Fax: 1.888.95.SPRAY Intl. Fax: 1.630.260.0842

www.spray.com



Spray
Nozzles



Spray
Control



Spray
Analysis



Spray
Fabrication

